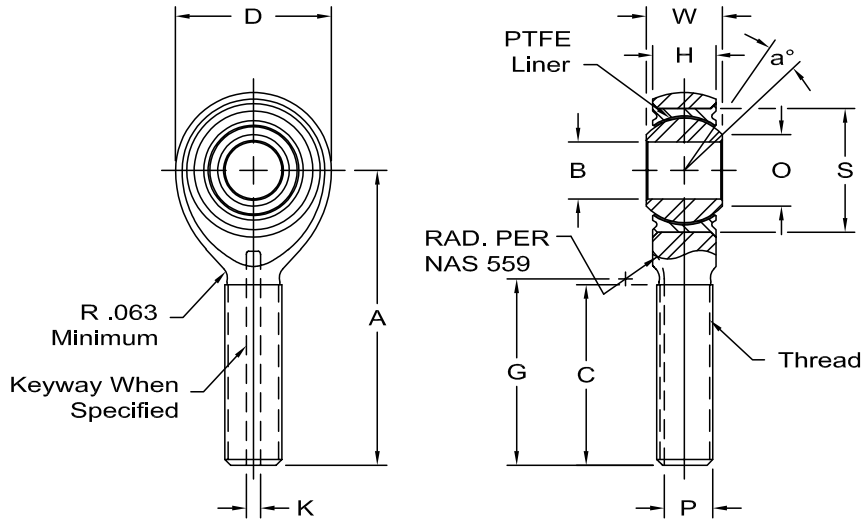


ASM-T & ASB-T MALE ROD ENDS

SAE Series AS81935/1 (Right Hand) & AS81935/1 (Left Hand)



Body - 4340 Alloy Steel (AMS 6415), heat treated, cadmium plated.

Race - 17-4 PH stainless steel (AMS 5643), heat treated

Ball - 440C stainless steel (AMS 5630), heat treated

Liner - AT3200 bearing liner, permanently bonded to race I.D., qualified to SAE-AS81820 Type A

C ± .031	Thread UNJF-3A	a° Misalign. Angle Min.	Approx. Brg. Wt. Lbs.	Ult. Static Radial Load Lbs.	Fatigue Load Lbs.	Axial Proof Load Lbs.	No Load Rotational Breakaway Torque In-Lbs.		SAE NO.		AURORA NO.	
							Min.	Max.	Right Hand	Left Hand	Right Hand	Left Hand
.968	5/16-24	15	.072	2,360	1,470	1,000	.5	6	M81935/1-03	M81935/1-03L	ASM-3T	ASB-3T
.968	5/16-24	15	.072	4,860	2,380	1,000	.5	6	M81935/1-04	M81935/1-04L	ASM-4T	ASB-4T
1.187	5/16-24	14	.087	7,180	2,770	1,100	1	15	M81935/1-05	M81935/1-05L	ASM-5T	ASB-5T
1.187	3/8-24	8	.136	8,550	3,570	1,660	1	15	M81935/1-06	M81935/1-06L	ASM-6T	ASB-6T
1.281	7/16-20	10	.183	12,000	4,800	1,850	1	15	M81935/1-07	M81935/1-07L	ASM-7T	ASB-7T
1.468	1/2-20	9	.278	19,500	7,680	2,040	1	15	M81935/1-08	M81935/1-08L	ASM-8T	ASB-8T
1.562	5/8-18	12	.424	21,900	9,180	2,430	1	15	M81935/1-10	M81935/1-10L	ASM-10T	ASB-10T
1.687	3/4-16	13	.639	29,300	11,600	2,810	1	15	M81935/1-12	M81935/1-12L	ASM-12T	ASB-12T
2.000	7/8-14	6	.963	34,500	13,100	3,320	1	24	M81935/1-14	M81935/1-14L	ASM-14T	ASB-14T
2.343	1 1/4-12	12	2.546	80,300	30,400	4,340	1	24	M81935/1-16	M81935/1-16L	ASM-16T	ASB-16T

